

SHIFT MANAGER

YOUR ROLE

In an emergency, you are the on-site Emergency Director.

You provide oversight for the supervisory team. You may communicate freely with your team members throughout the exercise.

You do not personally control (move) any staff members on the board. However, on your turn, you may spin the spinner and allocate your move to any other supervisor.

YOUR TEAM

CONTROL ROOM SUPERVISOR

- Responsible for assessing unit conditions and adjusting the plant performance indicators
- Uses the **LOSS OF AC POWER JOB AID** to inform operating decisions and **ASSESSMENTS**
- Controls three reactor operators (ROs) and one shift technical advisor (STA)

UNIT SUPERVISOR

- Responsible for field operations
- Directs Fire Brigade response
- Controls four equipment operators (EOs)

MAINTENANCE SUPERVISOR

- Responsible for actions to help address plant conditions
- Controls one electrical maintenance (EM) workers, two mechanical maintenance (MM) worker, and one instrument & controls (I&C) technician

TECHNICAL SUPERVISOR

- Responsible for actions to help address plant conditions
- Controls one radiation protection (RP) technician, one chemistry (CT) technician, and one electrical engineer (EE)

SECURITY SUPERVISOR

- Responsible for plant physical security
- Conducts personnel accountability using an Accountability Checklist
- Controls three security (Sec) officers

Intentionally blank

CONTROL ROOM SUPERVISOR

YOUR ROLE

- You are responsible for Control Room operations and any other activity assigned to your staff.
- You possess a **LOSS OF OFFSITE POWER JOB AID** (back of this sheet) to inform operating decisions and **ASSESSMENTS**.
- During an **ASSESSMENT**, it is your duty to adjust plant performance indicators.
- When personal protective equipment (PPE) is required, your staff is appropriately equipped.

CONTROL ROOM

- One RO must remain inside the Control Room at all times.

YOUR STAFF (ESSENTIAL PLANT PERSONNEL)



RENEE
RO
REACTOR OPERATOR

- Five years at the plant
- Associate degree in nuclear technology
- Feels like she has to prove herself
- Recently engaged to her high school sweetheart (Timothy, CT)



ROBERT
RO
REACTOR OPERATOR

- Six years at the plant
- Previously worked at a chemical plant
- Is an emergency medical technician with the local volunteer fire department.
- Hard worker and open to feedback
- Married with two sons, ages five and seven



RICK
RO
REACTOR OPERATOR

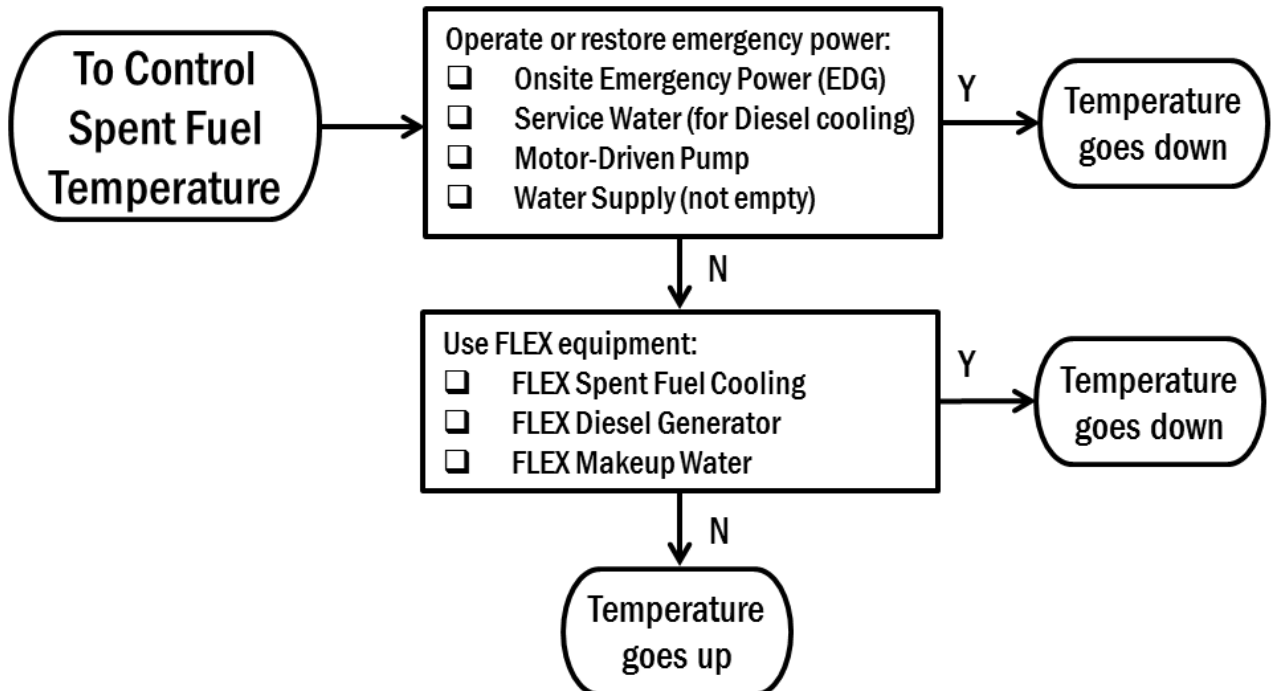
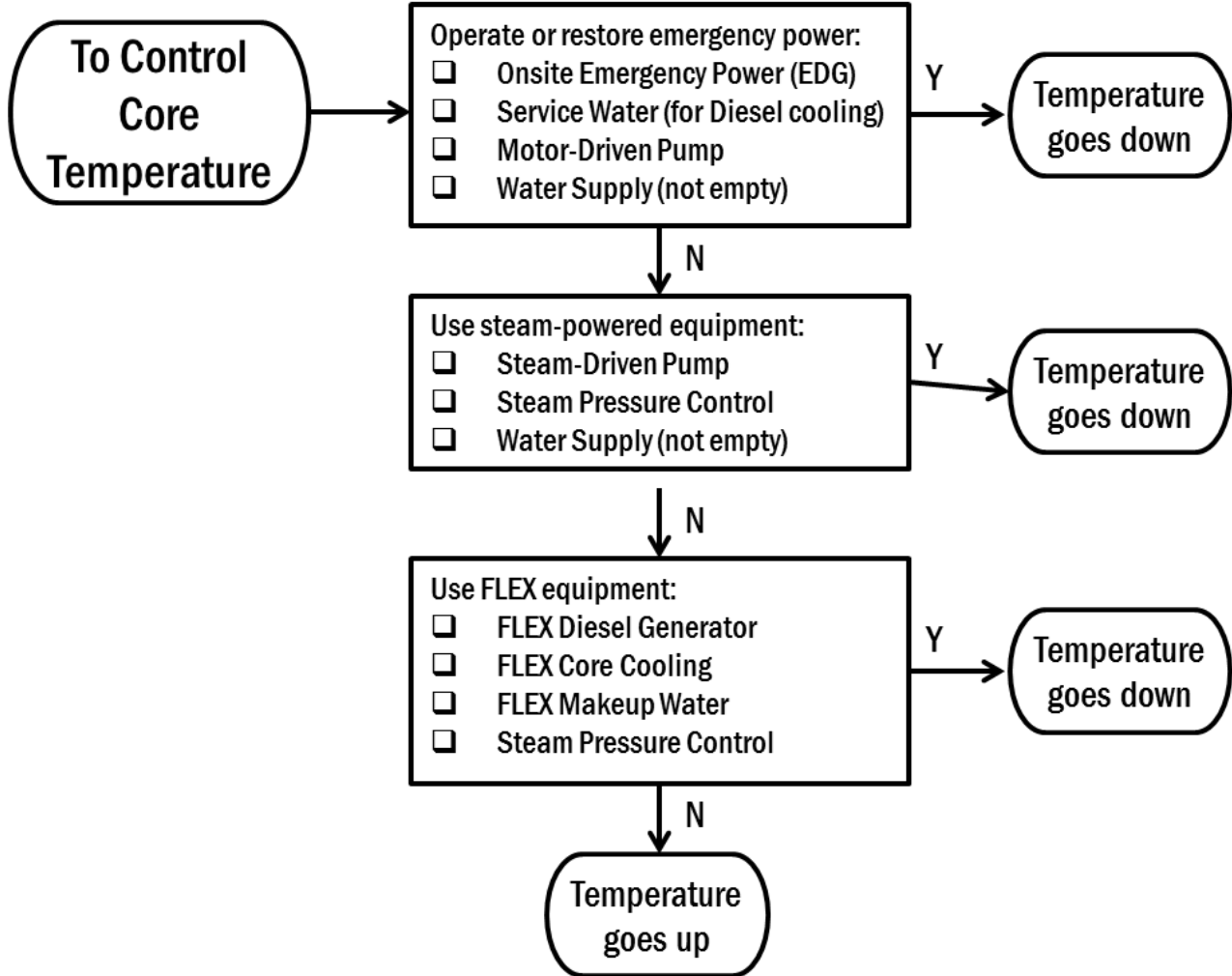
- Eleven years at the plant; knows his job well
- Often sarcastic or confrontational; others have complained about his arrogance
- Doesn't socialize with colleagues outside of work
- Married with one daughter in grade school



RYAN
STA
SHIFT TECHNICAL
ADVISOR

- Thirteen years in the industry but only two at this plant
- Degreed engineer with SRO cert, not a licensed operator
- Served six years in the marines
- Serious demeanor, rarely laughs or jokes around
- Married with three daughters, ages eleven, nine, and seven

LOSS OF OFFSITE POWER JOB AID



UNIT SUPERVISOR

YOUR ROLE

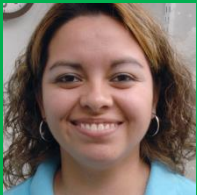
- You are responsible for field operations and Fire Brigade (FB) response.
- Your staff has the training to remove debris, operate FLEX vehicles, and stage portable equipment.
- Equipment Operators are Fire Brigade qualified. The FB can extinguish fires and prevent ignitions within five (5) board spaces of a FIRE EQUIPMENT HOOKUP, across any obstacles.
- For FB response move the following to a FIRE EQUIPMENT HOOKUP:
 - Two (2) Equipment Operators
 - FIRE EQUIPMENT (located in the FB Ready Room; may be moved by FB member or truck)
 - When implementing a fire response, lower Water Supply level by one (1) increment.
- When personal protective equipment (PPE) is required, your staff is appropriately equipped.

YOUR STAFF (ESSENTIAL PLANT PERSONNEL)



EMILIO
EO
EQUIPMENT OPERATOR

- Ten years at the plant
- Smart and hardworking but very quick to get defensive
- Has fun at the plant social events
- Married with a son and daughter



ERICA
EO
EQUIPMENT OPERATOR

- Twenty-eight years old, she is the newest team member
- Six years in the army reserves
- Her father worked in the nuclear industry and she knows the ropes
- Married for two years, she recently moved her ailing mother across the country in order to be more involved in her care



ED
EO
EQUIPMENT OPERATOR

- Thirty years at the plant with a wealth of experience
- Not open to coaching
- Tells great stories about the old days and sometimes intimidates newer team members
- Married with grandkids and loves to tell stories about their shenanigans



ETHAN
EO
EQUIPMENT OPERATOR

- Five years at the plant
- Former Navy
- Married about a year, no children
- Keeps to himself

Intentionally blank

MAINTENANCE SUPERVISOR

YOUR ROLE

- You are responsible for actions to address plant conditions.
- Your staff has the training to remove debris, operate FLEX vehicles, and stage portable equipment.
- When personal protective equipment (PPE) is required, your staff (shown below) is appropriately equipped.

YOUR STAFF (ESSENTIAL PLANT PERSONNEL)



MARTIN
I&C
INSTRUMENTS &
CONTROLS

- Three years at the plant, six years in the industry
- Tends to be confrontational and hierarchical; often complains about supervision
- Married with one eight-year-old son
- Volunteer scout leader, he often talks about the activities of the troop



MAUREEN
EM
ELECTRICAL
MAINTENANCE

- Six months at the plant
- Electrical engineering degree and extremely competent
- Friendly and outgoing; plays on the plant softball team
- Married, no children



MIKE
MM
MECHANICAL
MAINTENANCE

- Four years at the plant
- Mechanical engineering degree
- Loves to problem solve and think about long term solutions to major challenges
- Highly coachable
- Married; his wife is eight months pregnant with their first child



MATT
MM
MECHANICAL
MAINTENANCE

- Five years at the plant, eight years in the industry
- Has a “get it done” attitude and doesn’t like drama or time wasted in talking
- Married with three kids in high school

Intentionally blank

TECHNICAL SUPERVISOR

YOUR ROLE

- You are responsible for actions to help address plant conditions.
- Your staff has the training to remove debris, operate FLEX vehicles, and stage portable equipment.
- When personal protective equipment (PPE) is required, your staff (shown below) is appropriately equipped.

YOUR STAFF (ESSENTIAL PLANT PERSONNEL)



**TERRI
RP**
RADIATION PROTECTION

- Seven years at the plant
- Has almost completed a graduate degree
- Doesn't talk much but seems competent and friendly
- Married 26 years, has seven grandchildren
- SCBA qualified



**TIMOTHY
CT**
CHEMISTRY TECHNICIAN

- Two years at the plant; five years in the industry
- Competent and quick, he talks fast and gets things done
- Recently engaged to his high school sweetheart (Renee, RO)
- A fitness fanatic, talks constantly about cross-fit and his paleo diet



**TYRONE
EE**
ELECTRICAL ENGINEER

- Eight years at the plant
- Highly competent, and works well with the less experienced staff members
- Teaches in the nuclear technology department at the local community college
- Married with two daughters in college

Intentionally blank

SECURITY SUPERVISOR

YOUR ROLE

- You are responsible for plant physical security. Your security officers may perform other tasks as requested, if you deem appropriate.
- You perform personnel accountability using an Accountability Checklist (back of this sheet). It is your duty to submit this report to the Shift Manager.
- All security personnel are First Responder qualified.
- When personal protective equipment (PPE) is required, your staff (shown below) is appropriately equipped.

YOUR STAFF (ESSENTIAL PLANT PERSONNEL)



SALLY
Sec
SECURITY OFFICER

- Three years at the plant and stands out as an exceptional security officer
- Was accepted into the CIA training program but did not complete
- Married with an infant son; returned from maternity leave about a month ago
- Looking to buy first house



SID
Sec
SECURITY OFFICER

- One year at the plant, three years in the industry
- Smart and willing to learn
- Comes from a big family and tells great stories about his family gatherings
- Not married



SAM
Sec
SECURITY OFFICER

- Twenty years as a career security officer
- Has an impressive collection of guns and is an active concealed weapons course instructor
- Recently returned to work after extensive back surgery
- Married with one teenage son

ESSENTIAL PERSONNEL ACCOUNTABILITY CHECKLIST

Complete initial accountability and submit to Shift Manager. Note and track changes in personnel status.

SUPERVISOR		NAME	ROLE	NOTES
CONTROL ROOM SUPERVISOR		RENEE	RO	
		ROBERT	RO	
		RICK	RO	
		RYAN	STA	
UNIT SUPERVISOR		EMILIO	EO	
		ERICA	EO	
		ED	EO	
		ETHAN	EO	
MAINTENANCE SUPERVISOR		MARTIN	I&C	
		MAUREEN	EM	
		MIKE	MM	
		MATT	MM	
TECHNICAL SUPERVISOR		TERRI	RP	
		TIMOTHY	CT	
		TYRONE	EE	
SECURITY SUPERVISOR		SALLY	Sec	
		SID	Sec	
		SAM	Sec	